

DESIGN2SHIP™

QUICK SHIP PROGRAM

Peerless®

Intro

Business today moves fast and Acuity Brands® is ready to move fast with you! The Design2Ship™ Quick Ship program for our architectural brands is here to help you grow your business and spend more time securing new business than waiting for lighting shipments. Last minute architectural lighting changes on the project jobsite? Not an issue. Products in our Design2Ship™ program will ship in 5 days!

Bruno LED	4
Cerra 7 LED	6
Cerra 10 LED	8
Square LED	10
Round LED	22

A+ Capable options indicated by this color background.



Program Details

How to Order

1. All Design2Ship orders should be activated through Agile.
2. Ship dates are 5 business days from date of clean release.
Order lines must process and validate upon entry.
 - For Mark, Peerless, Winona, and Hydrel the complete Design2Ship catalog number(s) will include "QS" if part of the program. If you have an UNK, NCI, or BOM status, re-check your spec sheet to correct nomenclature.
 - For Gotham, Aculux, and Indy part numbers should be constructed from program-eligible options in green text on the spec sheets. If you have an UNK status, re-check your spec sheet to correct nomenclature.
3. Products not included in the Design2Ship program should be entered on a separate purchase order. *
4. Please be aware of the maximum order quantity listed on the product specification sheet. **
5. Please indicate any shipping notes or site restrictions.
6. Order Requirements include:
 - Complete ship-to address
 - Contact information
 - Complete quick ship catalog number
 - Pricing and commission rate

*Orders that include products not in the Design2Ship program will default to the longest lead time.

** If an order exceeds the product specification sheet quantity, then the following shall apply:

If less than or equal to two times the maximum Design2Ship quantity, the order will be split into two delivery dates. The first shipment will go in 5 days, followed by the second in 10 days.

If the order is more than two times the maximum Design2Ship quantity, then the order will not qualify as a Design2Ship order.

Changes/Cancellations

1. Changes to the order are not permitted.
2. Cancellation after release will result in a minimum 50% restock fee.

Shipping

1. Shipping lead time is 5 business days from date of clean release. All orders received after 3:30 p.m. EST will be processed the next business day and will receive an estimated ship date (ESD) from that date.

Notes

1. Specifications subject to change without notice.
2. Actual performance may differ as a result of end-user environment and application.

Please refer to product specification sheets online for complete product details.

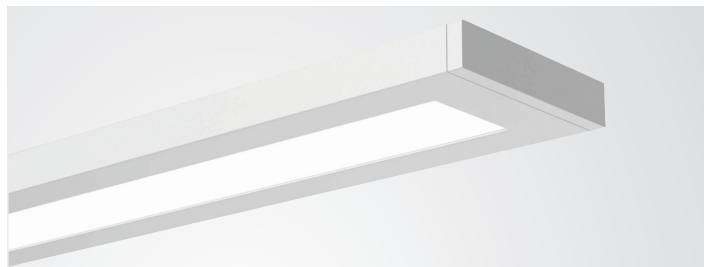


Peerless®

Bruno LED Design2Ship™ I/D or Direct | Suspended

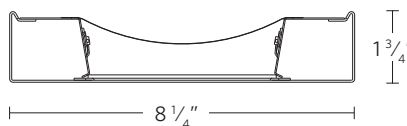
- 4', 8' and 12' sections and up to 140 lm/W
- Enhanced batwing distribution through optical film
- Flicker-free dimming to dark (0.1%) powered by eldoLED® driver

Maximum order quantity is 500 linear ft.



DIMENSIONS

□ BRM9L



MODEL NUMBER Example: BRM9L QS 16FT MSL8 80CRI 35K ID1300LMF 20/80 DARK ZT 120 SCT F1/24F C210

Luminaire	Program	Linear Length Plan	Total Run Length	Maximum Section Length	LED Color Rendering	LED Color Temperature
BRM9L	QS Quick ship (5 day shipping)	LLP Linear longest possible LSL Longest same length LCB Linear center balanced	_FT Indicate luminaire row length in 4" increments. Ex: 12FT	MSL4 4' section(s) MSL8 8' section(s) MSL12 12' section(s) *12' section is not available with nLight Air	80CRI 80+ CRI 90CRI 90+ CRI	30K 3000K 35K 3500K 40K 4000K

Indirect/Direct LED Output	Indirect/Direct Intensity Ratio	Minimum Dimming Level	Control Input	Voltage
ID800LMF 800 nominal lumens per foot ID1000LMF 1000 nominal lumens per foot ID1300LMF 1300 nominal lumens per foot ID1500LMF 1500 nominal lumens per foot	70/30 Std. 70% up; 30% down 60/40 60% up; 40% down 50/50 50% up; 50% down 40/60 40% up; 60% down 30/70 30% up; 70% down 20/80 20% up; 80% down 10/90 10% up; 90% down 0/100 0% up; 100% down *Nominal distribution. Refer to photometric tests for exact distribution.	DARK Constant current, dimming to < 1% MIN1 Constant current, dimming to 1%	ZT* 0-10V NLIGHT** nLight enabled *0-10V will use linear dimming curve **Will use Logarithmic dimming curve.	120 120V 277 277V 347* 347V *J-box mount step down transformer (1) per section *Not available with nLIGHT

Wiring Option	Emergency Options	Primary Sensor	Secondary Sensor
SCT Single circuit	(Blank) None 1EC (1) emergency circuit module 2EC (2) emergency circuit module _EC ___ emergency circuit modules _E10WLCP _10 Watt battery pack, constant power with self diagnostics. T20 Compliant *Emergency type is installed in last 4' of luminaire sections. Separate feed required. **E10WLCP battery pack are not available with CSA ***Battery pack must be ordered with minimum of 50% down light VDR option	(blank) No factory-installed, integrated sensor PDT_ Dual technology occupancy sensor. PIR & microphonics sensor ADC_ Daylight Dimming Sensor APD_ Dual technology occupancy sensor and daylight dimming sensor APL_* Passive infrared occupancy sensor and daylight dimming sensor *Available with NLTAIR only	(blank) No factory-installed, integrated sensor SPDT_ Dual technology occupancy sensor. PIR & microphonics sensor SADC_ Daylight Dimming Sensor SAPD_ Dual technology occupancy sensor and daylight dimming sensor

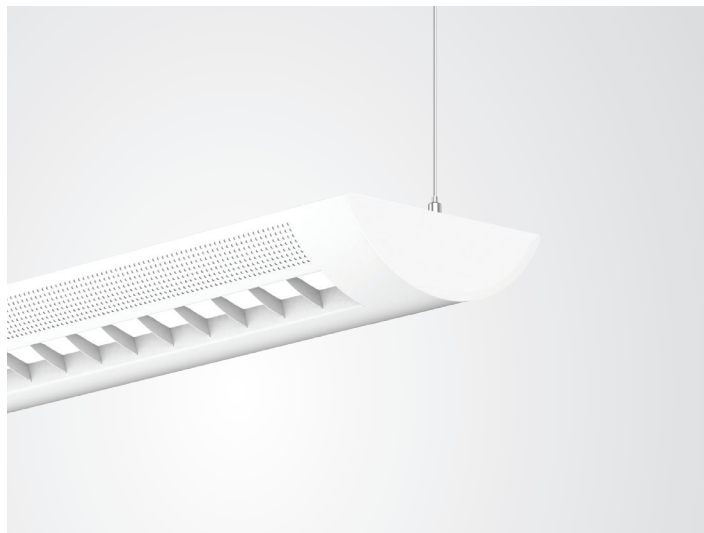
Mounting Type/	Overall Suspension	Color	Options
F1/ T-bar ceiling (universal mounting bracket) F1A/ T-bar ceiling (UMB with integrated J-box) F2/ Hard ceiling (horizontal J-box)	12F 12" fixed 18F 18" fixed 24F 24" fixed 24A 24" adjustable 36A 36" adjustable 48A 48" adjustable 72A 72" adjustable *Measured from ceiling to bottom of luminaire.	C210 White white (fine textured)	CSA Manufactured to Canadian standards CP Chicago Plenum (available with F1A only) DU* Dust cover ELH** Emergency through wiring w/single feed, shared neutral ELS2** Emergency through wiring w/single feed, separate neutrals GLR Fast blow GMF Slow blow MCS Matching canopy at support for aesthetics MCSJ Matching canopy for J-box mounting at non-power feed support locations OJB Offset J-box at feed *Not available with 0/100 distribution **Not available with CSA ***Not available with nLight

Peerless®

Cerra® 7 LED Design2Ship™ Lightvent Indirect | Suspended

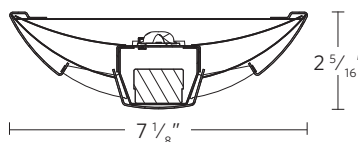
- Total System Integration features
5-year limited warranty by Acuity Brands covering all components and construction
- 4', 8' and 12' sections
- Up to 112 lm/W
- Two lumen packages
- High performance batwing distribution using injection molded optic
- Flicker-free dimming to dark (0.1%) powered by eldoLED® driver
- Integrated nLight®
- Integrated sensor for daylight dimming and/or occupancy detection (optional)

Maximum order quantity is 500 linear ft.



DIMENSIONS

□ 7CRM3L



eldoLED



MODEL NUMBER Example: 7CRM3L QS LLP 16FT MSL8 80 CRI 35K I700LMF DARK ZT 120 SCT FI/24A C210

Luminaire	Program	Linear Length Plan	Total Run Length	Maximum Section Length	LED Color Rendering	LED Color Temperature	Indirect LED Output	Minimum Dimming Level
7CRM3L	QS Quick ship (5 day shipping)	LLP Linear longest possible LCB Linear center balanced LSL Longest same length	___FT Indicate luminaire row length in 4' increments. Ex: 12FT	MSL4 4' section(s) MSL8 8' section(s) MSL12 12' section(s)	80CRI 80+ CRI	30K 3000K 35K 3500K 40K 4000K	I700LMF 700 nominal indirect lumens per foot I1300LMF 1300 nominal indirect lumens per foot	DARK Constant current, dimming to < 1%

Control Input	Voltage	Wiring Option	Emergency Options	Primary Sensor	Secondary Sensor
ZT* 0-10V NLIGHT** nLight enabled *0-10V will use linear dimming curve **Will use Logarithmic dimming curve	120 120V 277 277V	SCT Single circuit	(Blank) None 1EC (1) Emergency circuit module 2EC (2) Emergency circuit module ___EC ___ Emergency circuit modules *Emergency type is installed in last 4' of luminaire sections. Separate feed required.	(blank) No factory-installed, integrated sensor PDT_ Dual technology occupancy sensor. PIR & microphonics sensor ADC_ Daylight Dimming Sensor APD_ Dual technology PDT and ADC sensor *Available with ZT or nLight only	(blank) No factory-installed, integrated sensor SPDT_ Dual technology occupancy sensor. PIR & microphonics sensor SADC_ Daylight Dimming Sensor SAPD_ Dual technology PDT and ADC sensor *Available with ZT or nLight only

Mounting Type/	Overall Suspension	Color	Options
F1/ T-bar ceiling (universal mounting bracket) F1A/ T-bar ceiling (UMB with integrated J-box) F2/ Hard ceiling (horizontal J-box)	12F 12" fixed 18F 18" fixed 24F 24" fixed 24A 24" adjustable 36A 36" adjustable 48A 48" adjustable 72A 72" adjustable *Measured from ceiling to bottom of luminaire.	C210 White white (fine textured)	CSA Manufactured to Canadian Standards CP Chicago Plenum (available with F1A only) ELH** Emergency through wiring w/single feed, shared neutral ELS2** Emergency through wiring w/single feed, separate neutrals GLR Fast blow GMF Slow blow MCS Matching canopy at support for aesthetics MCSJ Matching canopy for J-box mounting at non-power feed support locations OJB Offset J-box at feed *Not available with nLight **Not available with CSA

Peerless®

Cerra® 7 LED Design2Ship™ Parital Perforation Indirect | Suspended

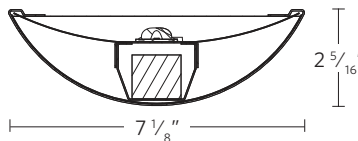
- Total System Integration features
5-year limited warranty by Acuity Brands covering all components and construction
- 4', 8' and 12' sections
- Up to 105 lm/W
- Two lumen packages
- High performance batwing distribution using injection molded optic
- Flicker-free dimming to dark (0.1%) powered by eldoLED® driver
- Integrated nLight®
- Integrated sensor for daylight dimming and/or occupancy detection (optional)

Maximum order quantity is 500 linear ft.



DIMENSIONS

□ 7CRM7L



eldoLED



MODEL NUMBER Example: 7CRM7L QS LLP 16FT MSL8 80 CRI 35K I700LMF DARK ZT 120 SCT F1/24A C210

Luminaire	Program	Linear Length Plan	Total Run Length	Maximum Section Length	LED Color Rendering	LED Color Temperature	Indirect LED Output	Minimum Dimming Level
7CRM7L	QS Quick ship (5 day shipping)	LLP Linear longest possible LCB Linear center balanced LSL Longest same length	___FT <i>Indicate luminaire row length in 4' increments. Ex: 12FT</i>	MSL4 4' section(s) MSL8 8' section(s) MSL12 12' section(s)	80CRI 80+ CRI	30K 3000K 35K 3500K 40K 4000K	I700LMF 700 Nominal lumens per foot I1300LMF 1300 Nominal lumens per foot	DARK Constant current, dimming to < 1%

Control Input	Voltage	Wiring Option	Emergency Options	Primary Sensor	Secondary Sensor
ZT* 0-10V nLIGHT** nLight enabled	120 120V 277 277V	SCT Single circuit	(Blank) None 1EC (1) Emergency circuit module 2EC (2) Emergency circuit module __EC ___ Emergency circuit modules <i>*Emergency type is installed in last 4' of luminaire sections. Separate feed required.</i>	(blank) No factory-installed, integrated sensor PDT_ Dual technology occupancy sensor, PIR & microphonics sensor ADC_ Daylight Dimming Sensor APD_ Dual technology PDT and ADC sensor <i>*Available with ZT or nLight only</i>	(blank) No factory-installed, integrated sensor SPDT_ Dual technology occupancy sensor, PIR & microphonics sensor SADC_ Daylight Dimming Sensor SAPD_ Dual technology PDT and ADC sensor <i>*Available with ZT or nLight only</i>

Mounting Type/	Overall Suspension	Color	Options
F1/ T-bar ceiling (universal mounting bracket)	12F 12" fixed 18F 18" fixed 24F 24" fixed	C210 White white (fine textured)	CSA Manufactured to Canadian Standards CP Chicago Plenum (available with F1A only) ELH** Emergency through wiring w/single feed, shared neutral ELS2** Emergency through wiring w/single feed, separate neutrals GLR Fast Blow GMF Slow Blow MCS Matching canopy at support for aesthetics MCSJ Matching canopy for J-box mounting at non-power feed support locations <i>*Not available with nLight **Not available with CSA</i>
F1A/ T-bar ceiling (UMB with integrated J-box)	24A 24" adjustable 36A 36" adjustable 48A 48" adjustable		
F2/ Hard ceiling (horizontal J-box)	72A 72" adjustable <i>*Measured from ceiling to bottom of luminaire.</i>		

Peerless®

Cerra® 10 LED Design2Ship™

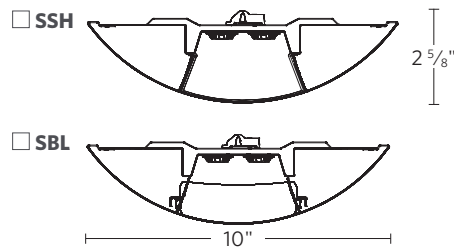
I/D | Suspended

- Total System Integration features 5-year limited warranty by Acuity Brands covering all components and construction
- 4', 8' and 12' sections
- Up to 115 lm/W
- Four lumen packages
- High performance batwing distribution using injection molded optic
- Dual dimming options
- Flicker-free dimming to dark (0.1%) powered by eldoLED® driver
- Integrated nLight® for system networking wired and wireless (optional)
- Integrated nLight sensor for daylight dimming and/ or occupancy detection (optional)

Maximum order quantity is 500 linear ft.



DIMENSIONS



MODEL NUMBER Example: 10CRM4L QS LLP 8FT MSL8 80CRI SSH 35K I1000LMF 700LMF DARK ZT 120 SCT F1/24F C210

Luminaire	Program	Linear Length Plan	Total Run Length	Maximum Section Length	LED Color Rendering	Lensing	LED Color Temperature
10CRM4L	QS Quick ship (5 day shipping)	LLP Linear longest possible LSL Longest same length LCB Linear center balanced	___FT Indicate luminaire row length in 4' increments. Ex: 12FT	MSL4 4' section(s) MSL8 8' section(s) MSL12 12' section(s) *12' section is not available with nLight Air	80CRI 80+ CRI 90CRI 90+ CRI	SBL Straight Blade Baffle SSH Softshine High Performance Lens	30K 3000K 35K 3500K 40K 4000K

Indirect LED Output	Direct LED Output	Minimum Dimming Level	Control Input	Voltage
I700LMF 700 nominal lumens per foot I1000LMF 1000 nominal lumens per foot I1300LMF 1300 nominal lumens per foot	300LMF 300 nominal lumens per foot 500LMF 500 nominal lumens per foot 700LMF 700 nominal lumens per foot 1000LMF 1000 nominal lumens per foot	DARK Constant current, dimming to < 1% MIN1 Constant current, dimming to 1%	ZT* 0-10V NLIGHT** nLight enabled *0-10V will use linear dimming curve **Will use Logarithmic dimming curve	120 120V 277 277V *J-box mount step down transformer (1) per section

Wiring Option	Emergency Options	Primary Sensor	Secondary Sensor
SCT Single circuit DCT Dual Circuit	(Blank) None 1EC (1) emergency circuit module 2EC (2) emergency circuit module _EC ___ emergency circuit modules _E10WLCP _10 Watt battery pack, constant power with self diagnostics. T20 Compliant *Emergency type is installed in last 4' of luminaire sections. Separate feed required. **E10WLCP battery pack are not available with CSA	(blank) No factory-installed, integrated sensor PDT_ Dual technology occupancy sensor. PIR & microphonics sensor ADC_ Daylight Dimming Sensor APD_ Dual technology occupancy sensor and daylight dimming sensor APL* Passive infrared occupancy sensor and daylight dimming sensor *Available with NLTAIR only	(blank) No factory-installed, integrated sensor SPDT_ Dual technology occupancy sensor. PIR & microphonics sensor SADC_ Daylight Dimming Sensor SAPD_ Dual technology occupancy sensor and daylight dimming sensor SAPL* Passive infrared occupancy sensor and daylight dimming sensor *Available with NLTAIR only

Mounting Type/	Overall Suspension	Color	Options
F1/ T-bar ceiling (universal mounting bracket) F1A/ T-bar ceiling (UMB with integrated J-box) F2/ Hard ceiling (horizontal J-box)	12F 12" fixed 18F 18" fixed 24F 24" fixed 24A 24" adjustable 36A 36" adjustable 48A 48" adjustable 72A 72" adjustable *Measured from ceiling to bottom of luminaire.	C210 White white (fine textured)	CSA Manufactured to Canadian standards CP Chicago Plenum (available with F1A only) DU Dust cover ELH** Emergency through wiring w/single feed, shared neutral ELS2** Emergency through wiring w/single feed, separate neutrals GLR Fast blow GMF Slow blow MCS Matching canopy at support for aesthetics MCSJ Matching canopy for J-box mounting at non-power feed support locations OJB Offset J-box at feed *Not available with NLIGHT **Not available with CSA

Peerless®

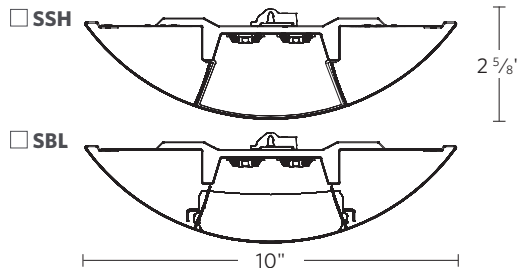
Cerra® 10 LED Design2Ship™ Tunable White I/D | Suspended

- Mainstream Dynamic Tunable White with nTune™ Technology
- Integrated nLight® for system networking
- 4' and 8' sections
- Up to 140 lm/W
- Eight distributions available
- Softshine®-engineered comfort optics
- Enhanced batwing distribution through optical film
- Flicker-free dimming to dark powered by eldoLED® driver
- Integrated sensor for daylight dimming and/ or occupancy detection (optional)

Maximum order quantity is 500 linear ft.



DIMENSIONS



MODEL NUMBER Example: 10CRM4L QS LLP 8FT MSL4 80CRI TUWH PROR ID700LMF DARK NLT 120 SCT F1/12F C210

Luminaire	Program	Linear Length Plan	Total Run Length	Maximum Section Length	LED Color Rendering	Lensing	Dynamic Feature
10CRM4L	QS Quick ship (5 day shipping)	LLP Linear longest possible LSL Longest same length	__FT <i>Indicate luminaire row length in 4' increments. Ex: 12FT</i>	MSL4 4' section(s) MSL8 8' section(s)	80CRI 80+CRI 90CRI 90+CRI	SBL Straight Blade Baffle SSH Softshine High Performance Lens	TUWH Tunable White

Dynamic Range	Indirect LED Output	Direct Light Output	Minimum Dimming Level	Control Interface	Voltage
PROR 3000K-5000K RHYR 2700K-6500K	I700LMF 700 nominal lumens per foot I1000LMF 1000 nominal lumens per foot I1300LMF 1300 nominal lumens per foot	300LMF 300 Nominal lumens per foot 500LMF 500 Nominal lumens per foot 700LMF 700 Nominal lumens per foot 1000LMF 1000 Nominal lumens per foot	DARK Constant current, dimming to < 1%	NLT* nLight nTune interface <i>*Will use Logarithmic dimming curve</i>	120 120V 277 277V

Wiring Option	Emergency Options	Primary Sensor	Secondary Sensor	Mounting Type/
SCT Single circuit	(Blank) None 1EC (1) emergency circuit module 2EC (2) emergency circuit module _EC ___ emergency circuit modules _E10WLCP _10 Watt battery pack, constant power with self diagnostics. T20 Compliant <i>*Emergency type is installed in last 4' of luminaire sections. Separate feed required. **E10WLCP battery pack are not available with CSA</i>	(blank) No factory-installed, integrated sensor PDT_ Dual technology occupancy sensor. PIR & microphonics sensor ADC_ Daylight Dimming Sensor APD_ Dual technology occupancy sensor and daylight dimming sensor	(blank) No factory-installed, integrated sensor SPDT_ Dual technology occupancy sensor. PIR & microphonics sensor SADC_ Daylight Dimming Sensor SAPD_ Dual technology occupancy sensor and daylight dimming sensor	F1/ T-bar ceiling (universal mounting bracket) F1A/ T-bar ceiling (UMB with integrated J-box) F2/ Hard ceiling (horizontal J-box)

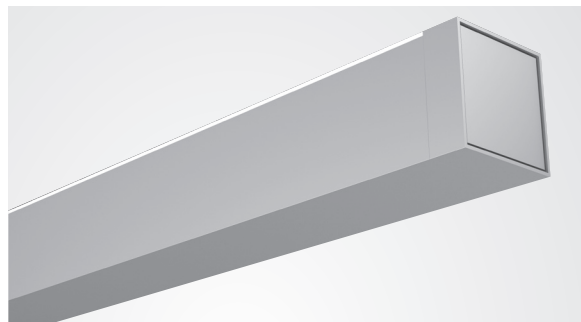
Overall Suspension	Color	Options
12F 12" fixed 18F 18" fixed 24F 24" fixed 24A 24" adjustable 36A 36" adjustable 48A 48" adjustable 72A 72" adjustable <i>*Measured from ceiling to bottom of luminaire.</i>	C210 White white (fine textured)	CSA Manufactured to Canadian standards CP Chicago Plenum (available with F1A only) DU Dust cover ELH* Emergency through wiring w/single feed, shared neutral ELS2* Emergency through wiring w/single feed, seperate neutrals GLR Fast blow GMF Slow blow MCS Matching canopy at support for aesthetics MCSJ Matching canopy for J-box mounting at non-power feed support locations OJB Offset J-box at feed <i>*Not available with CSA</i>

Peerless®

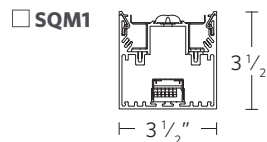
Square LED Design2Ship™ Indirect | Suspended

- Total System Integration features 5-year limited warranty by Acuity Brands covering all components and construction
- 4' and 8' sections
- Up to 93 lm/W
- Two lumen packages
- High performance batwing distribution using injection molded optic
- Flicker-free dimming to dark (0.1%) powered by eldoLED® driver
- Integrated nLight® module for system networking (optional)
- Integrated sensor for daylight dimming and/ or occupancy detection (optional)
- Flat end caps

Maximum order quantity is 500 linear ft.



DIMENSIONS



MODEL NUMBER Example: SQM1 QS LLP 16FT MSL8 80CRI 35K 500LMF DARK ZT 120 SCT F1/24A C032

Luminaire	Program	Linear Length Plan	Total Run Length	Maximum Section Length	LED Color Rendering	LED Color Temperature	Indirect LED Output
SQM1	QS Quick ship (5 day shipping)	LLP Linear longest possible LSL Longest same length	_FT <i>Indicate Luminaire Row Length in 4' increments. Ex: 12FT</i>	MSL4 4' Section(s) MSL8 8' Section(s)	80CRI 80+ CRI	30K 3000K 35K 3500K 40K 4000K	1500LMF 500 nominal indirect lumens per foot 1900LMF 900 nominal indirect lumens per foot

Minimum Dimming Level	Control Input	Voltage	Wiring Option	Emergency Options	Primary Sensor	Secondary Sensor
DARK Constant current, dimming to < 1%	ZT* 0-10V NLIGHT** nLight enabled <small>*0-10V will use linear dimming curve ** Will use logarithmic dimming curve</small>	120 120V 277 277V	SCT Single circuit	(Blank) None 1EC (1) Emergency circuit module 2EC (2) Emergency circuit module _EC ___ Emergency circuit modules <small>Emergency type is installed in last 4' of luminaire sections. Separate feed required.</small>	(blank) No factory-installed, integrated sensor PDT_ Dual technology occupancy sensor. PIR & microphonics sensor ADC_ Daylight Dimming Sensor APD_ Dual technology PDT and ADC sensor <small>*Available with ZT or nLight only</small>	(blank) No factory-installed, integrated sensor SPDT_ Dual technology occupancy sensor. PIR & microphonics sensor SADC_ Daylight Dimming Sensor SAPD_ Dual technology PDT and ADC sensor <small>*Available with ZT or nLight only</small>

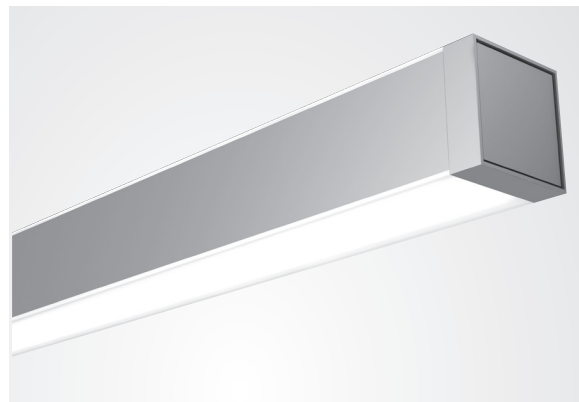
Mounting Type/	Overall Suspension	Color	Options
F1/ T-bar ceiling (universal mounting bracket)	24A 24" adjustable 36A 36" adjustable	C032 Gloss white	CSA Manufactured to Canadian Standards GLR Fast blow
F1A/ T-bar ceiling (UMB with integrated J-box)	48A 48" adjustable 72A 72" adjustable <small>Measured from ceiling to bottom of luminaire.</small>		GMF Slow blow CP Chicago Plenum (available with F1A only) MCS Matching canopy at support for aesthetics
F2/ Hard ceiling (horizontal J-box)			ELH* Emergency through wiring w/ single feed, shared neutral MCSJ Matching canopy for J-box mounting at non-power feed support locations ELS2* Emergency through wiring w/ single feed, separate neutrals OJB Offset J-box at feed DU Dust cover <small>*Not available with CSA</small>

Peerless®

Square LED Design2Ship™

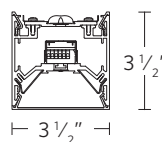
I/D | Suspended

- Total System Integration features 5-year limited warranty by Acuity Brands covering all components and construction
- 4' and 8' sections
- Up to 94 lm/W
- Four distributions available
- Softshine®-engineered comfort optics
- High performance batwing distribution using injection molded optic
- Continuously illuminated lens
- Flicker-free dimming to dark (0.1%) powered by eldoLED® driver
- Optional dual circuit switching for independent dimming of indirect and direct light outputs.
- Integrated nLight® module for system networking (optional)
- Integrated sensor for daylight dimming and/or occupancy detection (optional)



DIMENSIONS

□ SQM4



Maximum order quantity is 500 linear ft.



eldoLED



MODEL NUMBER Example: SQM4 QS LLP 16FT MSL8 80CRI 35K I500LMF 500LMF DARK ZT 120 SCT F1/24A C032

Luminaire	Program	Linear Length Plan	Total Run Length	Maximum Section Length	LED Color Rendering	LED Color Temperature	Indirect LED Output	Direct LED Output
SQM4	QS Quick ship (5 day shipping)	LLP Linear longest possible LSL Longest same length	__FT <i>Indicate Luminaire Row Length in 4' increments. Ex: 12FT</i>	MSL4 4' Section(s) MSL8 8' Section(s)	80CRI 80+ CRI	30K 3000K 35K 3500K 40K 4000K	1500LMF 500 nominal indirect lumens per foot 1900LMF 900 nominal indirect lumens per foot	400LMF 400 nominal direct lumens per foot 800LMF 800 nominal direct lumens per foot

Minimum Dimming Level	Control Input	Voltage	Wiring Option	Emergency Options	Primary Sensor	Secondary Sensor
DARK Constant current, dimming to <1%	ZT* 0-10V NLIGHT** nLight enabled <i>*0-10V will use linear dimming curve ** Will use logarithmic dimming curve</i>	120 120V 277 277V 347* 347V <i>*J-box mount step down transformer (1) per section</i>	SCT Single circuit DCT* Dual circuit <i>For independent dimming of indirect and direct light outputs, choose DCT *DCT not available in 4' section and NLIGHT</i>	(Blank) None 1EC (1) Emergency circuit module 2EC (2) Emergency circuit module __EC __ Emergency circuit modules <i>Emergency type is installed in last 4' of luminaire sections. Separate feed required.</i>	(blank) No factory-installed, integrated sensor PDT_ Dual technology occupancy sensor. PIR & microphonics sensor ADC_ Daylight Dimming Sensor APD_ Dual technology PDT and ADC sensor <i>*Available with ZT or nLight only</i>	(blank) No factory-installed, integrated sensor SPDT_ Dual technology occupancy sensor. PIR & microphonics sensor SADC_ Daylight Dimming Sensor SAPD_ Dual technology PDT and ADC sensor <i>*Available with ZT or nLight only</i>

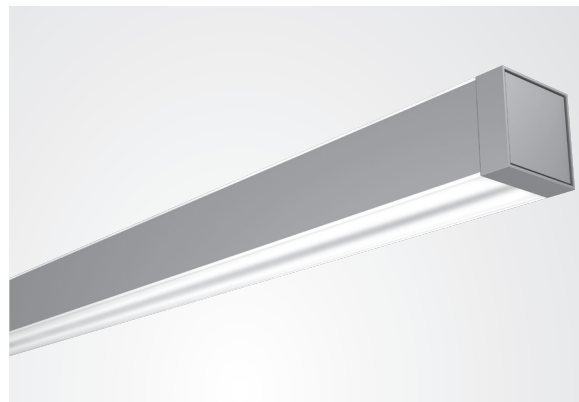
Mounting Type/	Overall Suspension	Color	Options
F1/ T-bar ceiling (universal mounting bracket) F1A/ T-bar ceiling (UMB with integrated J-box) F2/ Hard ceiling (horizontal J-box)	24A 24" adjustable 36A 36" adjustable 48A 48" adjustable 72A 72" adjustable <i>Measured from ceiling to bottom of luminaire.</i>	C032 Gloss white	CSA Manufactured to Canadian Standards CP Chicago Plenum (available with F1A only) ELH** Emergency through wiring w/single feed, shared neutral ELS2** Emergency through wiring w/single feed, separate neutrals GLR Fast blow <i>* Not available with NLIGHT ** Not available with CSA</i>

Peerless®

Square LED Design2Ship™ Aisle/Stack | I/D | Suspended

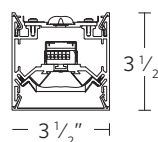
- Total System Integration features 5-year limited warranty by Acuity Brands covering all components and construction
- 4' and 8' sections
- Up to 88 lm/W
- Four distributions available
- High performance batwing and stack distribution using injection molded optics
- Meets or exceeds IESNA standards for vertical illumination ideal for 3' stacks to 7' aisles
- Flicker-free dimming to dark (0.1%) powered by eldoLED® driver
- Optional dual circuit switching for independent dimming of indirect and direct light outputs.
- Integrated nLight® module for system networking (optional)
- Integrated sensor for daylight dimming and/or occupancy detection (optional)
- Flat end caps

Maximum order quantity is 500 linear ft.



DIMENSIONS

□ SQM4 (ASO)



MODEL NUMBER Example: SQM4 QS LLP 16FT MSL8 80CRI 35K I500LMF 500LMF ASO DARK ZT 120 F1/24A C032

Luminaire	Program	Linear Length Plan	Total Run Length	Maximum Section Length	LED Color Rendering	LED Color Temperature	Indirect LED Output	Direct LED Output
SQM4	QS Quick ship (5 day shipping)	LLP Linear longest possible	__FT Indicate Luminaire Row Length in 4' increments. Ex: 12FT	MSL4 4' Section(s) MSL8 8' Section(s)	80CRI 80+ CRI	30K 3000K 35K 3500K 40K 4000K	1900LMF 900 nominal indirect lumens per foot I500LMF 500 nominal indirect lumens per foot	800LMF 800 nominal direct lumens per foot 400LMF 400 nominal direct lumens per foot
		LSL Longest same length						

Shielding	Minimum Dimming Level	Control Input	Voltage	Wiring Option	Emergency Options	Primary Sensor	Secondary Sensor
ASO Aisle/Stack optic	DARK Constant current, dimming to <1%	ZT* 0-10V NLIGHT** nLight enabled <small>*0-10V will use linear dimming curve **Will use logarithmic dimming curve</small>	120 120V 277 277V	SCT Single circuit DCT* Dual circuit <small>For independent dimming of indirect and direct light outputs, choose DCT. *DCT not available in 4' section and NLIGHT.</small>	(blank) None 1EC (1) Emergency circuit module 2EC (2) Emergency circuit module __EC __ Emergency circuit modules <small>Emergency type is installed in last 4' of luminaire sections. Separate feed required.</small>	(blank) No factory-installed, integrated sensor PDT_ Dual technology occupancy sensor. PIR & microphonics sensor ADC_ Daylight Dimming Sensor APD_ Dual technology PDT and ADC sensor <small>*Available with ZT or nLight only</small>	(blank) No factory-installed, integrated sensor SPDT_ Dual technology occupancy sensor. PIR & microphonics sensor SADC_ Daylight Dimming Sensor SAPD_ Dual technology PDT and ADC sensor <small>*Available with ZT or nLight only</small>

Mounting Type/	Overall Suspension	Color	Options
F1/ T-bar ceiling (universal mounting bracket)	24A 24" adjustable	C032 Gloss white	CSA Manufactured to Canadian Standards
F1/A T-bar ceiling (UMB with integrated J-box)	36A 36" adjustable		CP Chicago Plenum (available with F1A only)
F2/ Hard ceiling (horizontal J-box)	48A 48" adjustable		ELH** Through wire feed right
	72A 72" adjustable		ELS2** Through wire feed left with normal
	<small>Measured from ceiling to bottom of luminaire.</small>		GLR Fast blow
			<small>*Not available with NLIGHT **Not available with CSA</small>
			GMF Slow blow
			MCS Matching canopy at support for aesthetics
			MCSJ Matching canopy for J-box mounting at non-power feed support locations
			OJB Offset J-box at feed

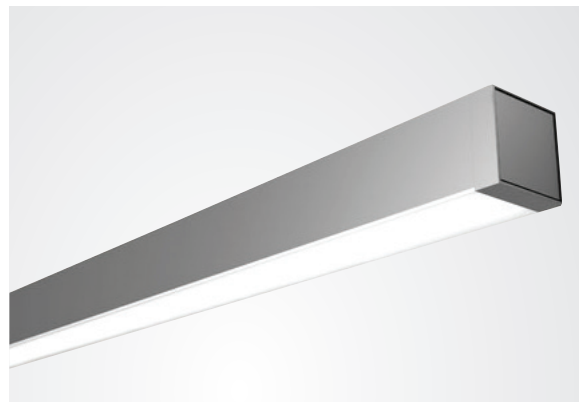
Peerless®

Square LED Design2Ship™

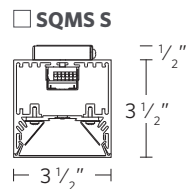
Direct | Surface

- Total System Integration features 5-year limited warranty by Acuity Brands covering all components and construction
- 4' and 8' sections
- Up to 86 lm/W
- Two lumen packages
- Softshine®-engineered comfort optics
- Flicker-free dimming to dark (0.1%) powered by eldoLED® driver
- Flat end caps

Maximum order quantity is 500 linear ft.



DIMENSIONS



eldoLED



MODEL NUMBER Example: SQMS QS S 8FT 80CRI 35K 800LMF DARK ZT 120 SCT C032

Luminaire	Program	Mounting Type	Total Run Length	LED Color Rendering	LED Color Temperature	Direct LED Output	Minimum Dimming Level
SQMS	QS Quick ship (5 day shipping)	S Surface ceiling mount	4FT 4FT individual 8FT 8FT individual	80CRI 80+ CRI	30K 3000K 35K 3500K 40K 4000K	400LMF 400 Nominal direct lumens per foot 800LMF 800 Nominal direct lumens per foot	DARK Constant current, dimming to < 1%
Control Input	Voltage	Wiring Option	Emergency Options	Color	Options		
ZT* 0-10V <small>*0-10V will use linear dimming curve</small>	120 120V 277 277V	SCT Single circuit	(Blank) None 1EC (1) Emergency circuit module	C032 Gloss white	CSA Manufactured to Canadian Standards GLR Fast blow GMF Slow blow		

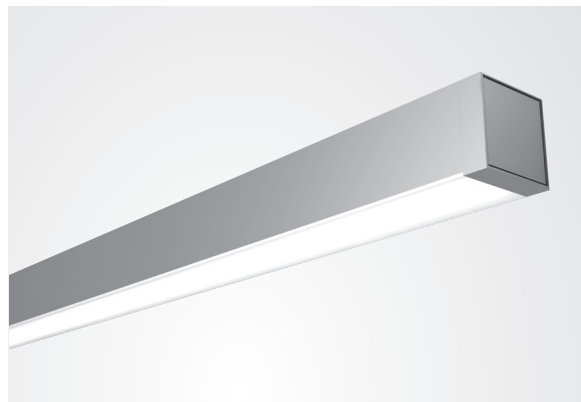
Peerless®

Square LED Design2Ship™

Direct | Suspended

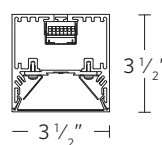
- Total System Integration features 5-year limited warranty by Acuity Brands covering all components and construction
- 4' and 8' sections
- Up to 86 lm/W
- Two lumen packages
- Softshine®-engineered comfort optics
- Continuously illuminated lens
- Available with lit corners
- Flicker-free dimming to dark (0.1%) powered by eldoLED® driver
- Integrated nLight® module for system networking (optional)
- Integrated sensor for daylight dimming and/or occupancy detection (optional)
- Flat end caps

Maximum order quantity is 500 linear ft.



DIMENSIONS

□ SQMS



MODEL NUMBER Example: SQMS QS LLP 16FT MSL8 80CRI 35K 800LMF DARK ZT 120 SCT F1/24A C032

Luminaire	Program	Linear Length Plan	Total Run Length	Maximum Section Length	LED Color Rendering	LED Color Temperature	Direct LED Output
SQMS	QS Quick ship (5 day shipping)	LLP Linear longest possible LSL Longest same length	__FT <i>Indicate Luminaire Row Length in 4' increments. Ex: 12FT</i>	MSL4 4' Section(s) MSL8 8' Section(s)	80CRI 80+ CRI	30K 3000K 35K 3500K 40K 4000K	400LMF 400 Nominal direct lumens per foot 800LMF 800 Nominal direct lumens per foot

Minimum Dimming Level	Control Input	Voltage	Wiring Option	Emergency Options	Primary Sensor	Secondary Sensor
DARK Constant current, dimming to <1%	ZT* 0-10V nLIGHT** nLight enabled <i>*0-10V will use linear dimming curve ** Will use logarithmic dimming curve</i>	120 120V 277 277V	SCT Single circuit	(Blank) None 1EC (1) Emergency circuit module 2EC (2) Emergency circuit module __EC __ Emergency circuit modules <i>Emergency type is installed in last 4' of luminaire sections. Separate feed required.</i>	(blank) No factory-installed, integrated sensor PDT_ Dual technology occupancy sensor. PIR & microphonics sensor ADC_ Daylight Dimming Sensor APD_ Dual technology PDT and ADC sensor <i>*Available with ZT or nLight only</i>	(blank) No factory-installed, integrated sensor SPDT_ Dual technology occupancy sensor. PIR & microphonics sensor SADC_ Daylight Dimming Sensor SAPD_ Dual technology PDT and ADC sensor <i>*Available with ZT or nLight only</i>

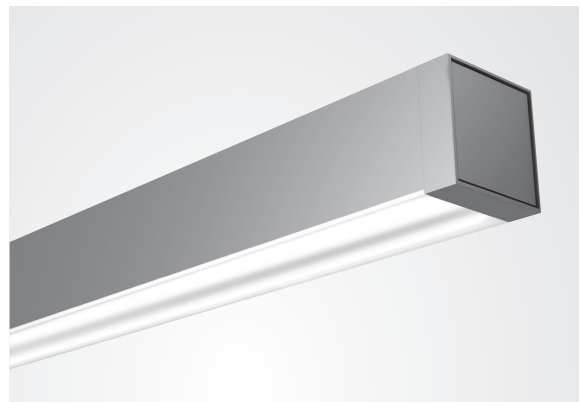
Mounting Type/	Overall Suspension	Color	Options
F1/ T-bar ceiling (universal mounting bracket) F1A/ T-bar ceiling (UMB with integrated J-box) F2/ Hard ceiling (horizontal J-box)	24A 24" adjustable 36A 36" adjustable 48A 48" adjustable 72A 72" adjustable <i>Measured from ceiling to bottom of luminaire.</i>	C032 Gloss white	CSA Manufactured to Canadian Standards CP Chicago Plenum (available with F1A only) ELH** Emergency through wiring w/single feed, shared neutral ELS2** Emergency through wiring w/single feed, separate neutrals GLR Fast blow <i>* Not available with nLIGHT ** Not available with CSA</i>
			GMF Slow blow MCS Matching canopy at support for aesthetics MCSJ Matching canopy for J-box mounting at non-power feed support locations OJB Offset J-box at feed <i>*Not available with nLIGHT **Not available with CSA</i>

Peerless®

Square LED Design2Ship™ Aisle/Stack/Direct | Suspended

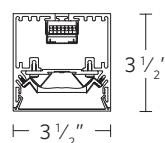
- Total System Integration features 5-year limited warranty by Acuity Brands covering all components and construction
- 4' and 8' sections
- Up to 79 lm/W
- Two lumen packages
- High performance stack distribution using injection molded optics
- Meets or exceeds IESNA standards for vertical illumination ideal for 3' stacks to 7' aisles
- Flicker-free dimming to dark (0.1%) powered by eldoLED® driver
- Integrated nLight® module for system networking (optional)
- Integrated sensor for daylight dimming and/or occupancy detection (optional)

Maximum order quantity is 500 linear ft.



DIMENSIONS

□ SQMS (ASO)



eldoLED



MODEL NUMBER Example: SQMS QS LLP 16FT MSL8 80CRI 35K 400LMF ASO DARK ZT 120 F1/24A C032

Luminaire	Program	Linear Length Plan	Total Run Length	Maximum Section Length	LED Color Rendering	LED Color Temperature	Direct LED Output
SQMS	QS Quick ship (5 day shipping)	LLP Linear longest possible LSL Longest same length	__FT Indicate Luminaire Row Length in 4' increments. Ex: 12FT	MSL4 4' Section(s) MSL8 8' Section(s)	80CRI 80+ CRI	30K 3000K 35K 3500K 40K 4000K	400LMF 400 nominal direct lumens per foot 800LMF 800 nominal direct lumens per foot

Shielding	Minimum Dimming Level	Control Input	Voltage	Wiring Option	Emergency Options	Primary Sensor	Secondary Sensor
ASO Aisle/Stack optic	DARK Constant current, dimming to < 1%	ZT* 0-10V NLIGHT** nLight enabled <small>*0-10V will use linear dimming curve **Will use logarithmic dimming curve</small>	120 120V 277 277V	SCT Single circuit	(blank) None 1EC (1) Emergency circuit module 2EC (2) Emergency circuit module __EC __ Emergency circuit modules <small>Emergency type is installed in last 4' of luminaire sections. Separate feed required.</small>	(blank) No factory-installed, integrated sensor PDT_ Dual technology occupancy sensor. PIR & microphonics sensor ADC_ Daylight Dimming Sensor APD_ Dual technology PDT and ADC sensor <small>*Available with ZT or nLight only</small>	(blank) No factory-installed, integrated sensor SPDT_ Dual technology occupancy sensor. PIR & microphonics sensor SADC_ Daylight Dimming Sensor SAPD_ Dual technology PDT and ADC sensor <small>*Available with ZT or nLight only</small>

Mounting Type/	Overall Suspension	Color	Options
F1/ T-bar ceiling (universal mounting bracket) F1/A T-bar ceiling (UMB with integrated J-box) F2/ Hard ceiling (horizontal J-box)	24A 24" adjustable 36A 36" adjustable 48A 48" adjustable 72A 72" adjustable <small>Measured from ceiling to bottom of luminaire.</small>	C032 Gloss white	CSA Manufactured to Canadian Standards CP Chicago Plenum (available with F1A only) ELH** Through wire feed right ELS2** Through wire feed left with normal GLR Fast blow <small>*Not available with NLIGHT **Not available with CSA</small>
			GMF Slow blow MCS Matching canopy at support for aesthetics MCSJ Matching canopy for J-box mounting at non-power feed support locations OJB Offset J-box at feed

Peerless®

Square LED Design2Ship™ Wall Wash | Surface Ceiling Mount

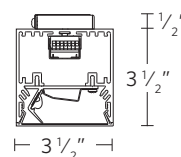
- Peerless 360° Total System Integration features 5-year limited warranty by Acuity Brands covering all components and construction
- 4' and 8' sections
- Up to 62 lm/W
- Two lumen packages
- High performance wall wash using injection molded optics
- Flicker-free dimming to dark (0.1%) powered by eldoLED® driver
- Integrated nLight® module for system networking (optional)
- Integrated sensor for daylight dimming and/or occupancy detection (optional)
- Flat end caps

Maximum order quantity is 500 linear ft.



DIMENSIONS

□ SQMW S



eldoLED



MODEL NUMBER Example: SQMW QS S 8FT 80CRI 35K 600LMF DARK ZT 120 SCT C032

Luminaire	Program	Mounting Type	Total Run Length	LED Color Rendering	LED Color Temperature	Direct LED Output
SQMW	QS Quick ship (5 day shipping)	S Surface ceiling mount	4FT 4FT individual 8FT 8FT individual	80CRI 80+ CRI	30K 3000K 35K 3500K 40K 4000K	300LMF 300 Nominal direct lumens per foot 600LMF 600 Nominal direct lumens per foot
Minimum Dimming Level		Control Input	Voltage	Wiring Option	Emergency Options	
DARK Constant current, dimming to < 1%		ZT* 0-10V <i>*0-10V will use linear dimming curve</i>	120 120V 277 277V	SCT Single circuit	(Blank) None EC Emergency circuit modules <i>Emergency type is installed in last 4' of luminaire sections. Separate feed required.</i>	
Color				Options		
C032 Gloss white				CSA Manufactured to Canadian Standards GLR Fast blow GMF Slow blow		

Peerless®

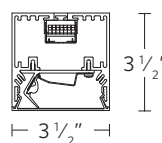
Square LED Design2Ship™ Wall Wash | Suspended

- Total System Integration features 5-year limited warranty by Acuity Brands covering all components and construction
- 4' and 8' sections
- Up to 62 lm/W
- Two lumen packages
- High performance wall wash using injection molded optics
- Flicker-free dimming to dark (0.1%) powered by eldoLED® driver
- Integrated nLight® module for system networking (optional)
- Integrated sensor for daylight dimming and/or occupancy detection (optional)
- Flat end caps



DIMENSIONS

□ SQMW



Maximum order quantity is 500 linear ft.



eldoLED



MODEL NUMBER Example: SQMW QS LLP 16FT MSL8 80CRI 35K 600LMF DARK ZT 120 SCT F1/24A C032

Luminaire	Program	Linear Length Plan	Total Run Length	Maximum Section Length	LED Color Rendering	LED Color Temperature	Direct LED Output
SQMW	QS Quick ship (5 day shipping)	LLP Linear longest possible LSL Longest same length	_FT <i>Indicate Luminaire Row Length in 4' increments. Ex: 12FT</i>	MSL4 4' Section(s) MSL8 8' Section(s)	80CRI 80+ CRI	30K 3000K 35K 3500K 40K 4000K	300LMF 300 nominal direct lumens per foot 600LMF 600 nominal direct lumens per foot

Minimum Dimming Level	Control Input	Voltage	Wiring Option	Emergency Options	Primary Sensor	Secondary Sensor
DARK Constant current, dimming to < 1%	ZT* 0-10V NLIGHT** nLight enabled <i>*0-10V will use linear dimming curve ** Will use logarithmic dimming curve</i>	120 120V 277 277V	SCT Single circuit	(Blank) None 1EC (1) Emergency circuit module 2EC (2) Emergency circuit module _EC ___ Emergency circuit modules <i>Emergency type is installed in last 4' of luminaire sections. Separate feed required.</i>	(blank) No factory-installed, integrated sensor PDT_ Dual technology occupancy sensor. PIR & microphonics sensor ADC_ Daylight Dimming Sensor APD_ Dual technology PDT and ADC sensor <i>*Available with ZT or nLight only</i>	(blank) No factory-installed, integrated sensor SPDT_ Dual technology occupancy sensor. PIR & microphonics sensor SADC_ Daylight Dimming Sensor SAPD_ Dual technology PDT and ADC sensor <i>*Available with ZT or nLight only</i>

Mounting Type/	Overall Suspension	Color	Options
F1/ T-bar ceiling (universal mounting bracket) F1A/ T-bar ceiling (UMB with integrated J-box) F2/ Hard ceiling (horizontal J-box)	24A 24" adjustable 36A 36" adjustable 48A 48" adjustable 72A 72" adjustable <i>Measured from ceiling to bottom of luminaire.</i>	C032 Gloss white	CSA Manufactured to Canadian Standards CP Chicago Plenum (available with F1A only) ELH** Emergency through wiring w/ single feed, shared neutral ELS2** Emergency through wiring w/ single feed, separate neutrals GLR Fast blow <i>* Not available with NLIGHT ** Not available with CSA</i>

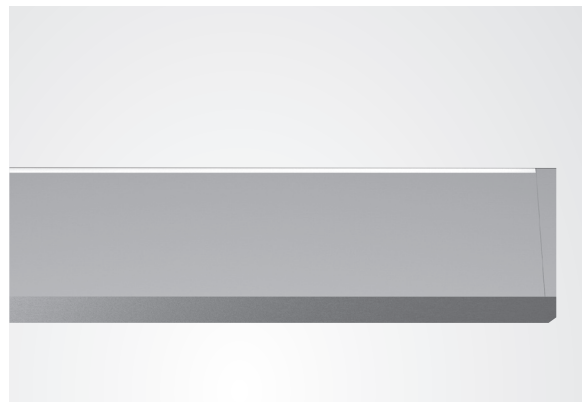
- GMF** Slow blow
- MCS** Matching canopy at support for aesthetics
- MCSJ** Matching canopy for J-box mounting at non-power feed support locations
- OJB** Offset J-box at feed
**Not available with NLIGHT
**Not available with CSA*

Peerless®

Square Wall LED Design2Ship™ Asymmetric | Indirect | Wall

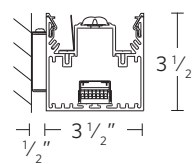
- Total System Integration features 5-year limited warranty by Acuity Brands covering all components and construction
- 4' and 8' sections
- Up to 93 lm/W
- Two lumen packages
- High performance asymmetric indirect distribution using injection molded optics
- Flicker-free dimming to dark (0.1%) powered by eldoLED® driver
- Flat end caps
- Low profile ADA compliant design

Maximum order quantity is 500 linear ft.



DIMENSIONS

□ SQW1



eldoLED

5
YEAR
warranty

DS

MODEL NUMBER Example: SQW1 QS LLP 16FT MSL8 80CRI 35K 500LMF DARK ZT 120 SCT F1/24A C032

Luminaire	Program	Linear Length Plan	Total Run Length	Maximum Section Length	LED Color Rendering	LED Color Temperature
SQW1	QS Quick ship (5 day shipping)	LLP Linear longest possible LSL Longest same length	_FT <i>Indicate Luminaire Row Length in 4' increments. Ex: 12FT</i>	MSL4 4' Section(s) MSL8 8' Section(s)	80CRI 80+ CRI	30K 3000K 35K 3500K 40K 4000K

Indirect LED Output	Minimum Dimming Level	Control Input	Voltage	Wiring Option
I500LMF 500 nominal indirect lumens per foot I900LMF 900 nominal indirect lumens per foot	DARK Constant current, dimming to < 1%	ZT* 0-10V <i>*0-10V will use linear dimming curve</i>	120 120V 277 277V	SCT Single circuit

Emergency Options	Color	Options
(Blank) None 1EC (1) Emergency circuit module 2EC (2) Emergency circuit module _EC ___ Emergency circuit modules <i>Emergency type is installed in last 4' of luminaire sections. Separate feed required.</i>	C032 Gloss white	CSA Manufactured to Canadian Standards ELH* Emergency through wiring w/single feed, shared neutral ELS2* Emergency through wiring w/single feed, separate neutrals GLR Fast blow GMF Slow blow DU Dust cover <i>*Not available with CSA</i>

Peerless®

Square Wall LED Design2Ship™ Stairway I/D | Wall

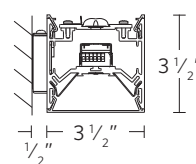
- Total System Integration features 5-year limited warranty by Acuity Brands covering all components and construction
- 4' and 8' sections
- Up to 88 lm/W
- Four lumen packages
- Softshine®-engineered comfort optics
- Asymmetric indirect distribution using injection molded optic
- Flicker-free dimming to dark (0.1%) powered by eldoLED® driver
- Integrated nLight occupancy sensor pre-programmed to 10% (STW MIN10) or 50% (STW MIN50) when unoccupied brightens to 100% when occupied
- Flat end caps
- Low profile ADA compliant design

Maximum order quantity is 500 linear ft.



DIMENSIONS

□ SQW4 STW



eldoLED



soft
shine



MODEL NUMBER Example: SQW4 QS STW 8FT 80CRI 35K I400LMF 400LMF MIN10 ZT 120 SCT C032

Luminaire	Program	Stairwell	Total Run Length	LED Color Rendering	LED Color Temperature	Indirect LED Output
SQW4	QS Quick ship (5 day shipping)	STW	4ft 4ft 8ft 8ft	80CRI 80+ CRI	30K 3000K 35K 3500K 40K 4000K	1500LMF 500 nominal indirect lumens per foot 1900LMF 900 nominal indirect lumens per foot

Direct LED Output	Minimum Dimming Level	Control Input	Voltage	Wiring Option
400LMF 400 nominal direct lumens per foot 800LMF 800 nominal direct lumens per foot	MIN10 10% dimming MIN50 50% dimming	ZT* 0-10V *0-10V will use linear dimming curve	120 120V 277 277V	SCT Single circuit

Emergency Options	Color	Options
(Blank) None 1EC (1) Emergency circuit module 2EC (2) Emergency circuit module __EC ___ Emergency circuit modules <i>Emergency type is installed in last 4' of luminaire sections. Separate feed required.</i>	C032 Gloss white	CSA Manufactured to Canadian Standards GLR Fast blow GMF Slow blow

Peerless®

Square Wall LED Design2Ship™ I/D | Wall

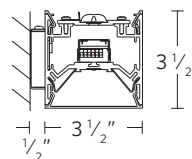
- Total System Integration features 5-year limited warranty by Acuity Brands covering all components and construction
- 4' and 8' sections
- Up to 87 lm/W
- Four lumen packages
- Softshine®-engineered comfort optics
- Asymmetric indirect distribution using injection molded optic
- Flicker-free dimming to dark (0.1%) powered by eldoLED® driver
- Integrated nLight occupancy sensor pre-programmed to 10% (STW MIN10) or 50% (STW MIN50) when unoccupied brightens to 100% when occupied
- Flat end caps
- Low profile ADA compliant design

Maximum order quantity is 500 linear ft.



DIMENSIONS

□ SQW4



eldoLED

soft
shine

MODEL NUMBER Example: SQW4 QS LLP 16FT MSL8 80CRI 35K I500LMF 500LMF DARK ZT 120 SCT F1/24A C032

Luminaire	Program	Linear Length Plan	Total Run Length	Maximum Section Length	LED Color Rendering	LED Color Temperature
SQW4	QS Quick ship (5 day shipping)	LLP Linear longest possible LSL Longest same length	__FT <i>Indicate Luminaire Row Length in 4' increments. Ex: 12FT</i>	MSL4 4' Section(s) MSL8 8' Section(s)	80CRI 80+ CRI	30K 3000K 35K 3500K 40K 4000K

Indirect LED Output	Direct LED Output	Minimum Dimming Level	Control Input	Voltage	Wiring Option
I500LMF 500 nominal indirect lumens per foot I900LMF 900 nominal indirect lumens per foot	400LMF 400 nominal direct lumens per foot 800LMF 800 nominal direct lumens per foot	DARK Constant current, dimming to < 1%	ZT* 0-10V <i>*0-10V will use linear dimming curve</i>	120 120V 277 277V	SCT Single circuit DCT Dual circuit <i>For independent dimming of indirect and direct light outputs, choose DCT</i>

Emergency Options	Color	Options
(Blank) None 1EC (1) Emergency circuit module 2EC (2) Emergency circuit module __EC __ Emergency circuit modules <i>Emergency type is installed in last 4' of luminaire sections. Separate feed required.</i>	C032 Gloss white	CSA Manufactured to Canadian Standards ELH* Emergency through wiring w/single feed, shared neutral ELS2* Emergency through wiring w/single feed, separate neutrals GLR Fast blow GMF Slow blow DU Dust cover <i>*Not available with CSA</i>

Peerless®

Square Wall LED Design2Ship™

Direct | Wall

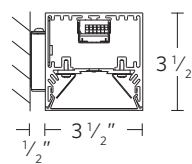
- Total System Integration features 5-year limited warranty by Acuity Brands covering all components and construction
- 4' and 8' sections
- Up to 86 lm/W
- Two lumen packages
- Softshine®-engineered comfort optics
- Continuously illuminated lens
- Flicker-free dimming to dark (0.1%) powered by eldoLED® driver
- Flat end caps
- Low profile ADA compliant design

Maximum order quantity is 500 linear ft.



DIMENSIONS

□ SQWS



eldoLED

5
YEAR
warranty

soft
shine

DS

MODEL NUMBER Example: SQWS QS LLP 16FT MSL8 80CRI 35K 800LMF DARK ZT 120 SCT F1/24A C032

Luminaire	Program	Linear Length Plan	Total Run Length	Maximum Section Length	LED Color Rendering	LED Color Temperature
SQWS	QS Quick ship (5 day shipping)	LLP Linear longest possible LSL Longest same length	_FT Indicate Luminaire Row Length in 4' increments. Ex: 12FT	MSL4 4' Section(s) MSL8 8' Section(s)	80CRI 80+ CRI	30K 3000K 35K 3500K 40K 4000K

Direct LED Output	Minimum Dimming Level	Control Input	Voltage	Wiring Option
400LMF 400 nominal direct lumens per foot 800LMF 800 nominal direct lumens per foot	DARK Constant current, dimming to <1%	ZT* 0-10V *0-10V will use linear dimming curve	120 120V 277 277V	SCT Single circuit

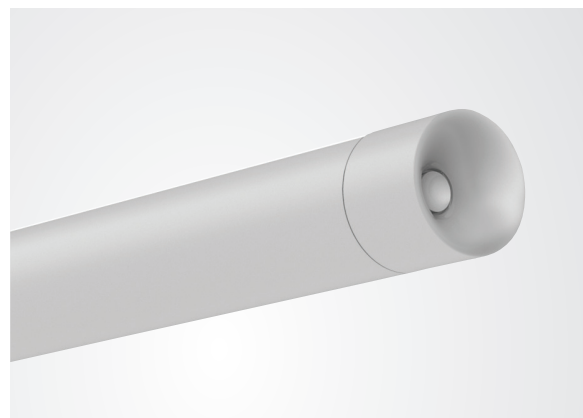
Emergency Options	Color	Options
(Blank) None 1EC (1) Emergency circuit module 2EC (2) Emergency circuit module _EC ___ Emergency circuit modules <i>Emergency type is installed in last 4' of luminaire sections. Separate feed required.</i>	C032 Gloss white	CSA Manufactured to Canadian Standards CP Chicago Plenum (available with F1A only) ELH* Emergency through wiring w/single feed, shared neutral ELS2* Emergency through wiring w/single feed, separate neutrals GLR Fast blow GMF Slow blow *Not available with CSA

Peerless®

Round 4 LED Design2Ship™ Indirect | Suspended

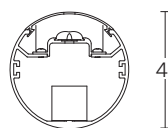
- Total System Integration features 5-year limited warranty by Acuity Brands covering all components and construction
- 4' and 8' sections
- Up to 77 lm/W
- Two lumen packages
- High performance batwing distribution using injection molded optic
- Flicker-free dimming to dark (0.1%) powered by eldoLED® driver
- Integrated nLight® module for system networking (optional)
- Integrated sensor for daylight dimming and/or occupancy detection (optional)

Maximum order quantity is 500 linear ft.



DIMENSIONS

□ RD4M1



eldoLED

5 YEAR warranty

soft shine

MODEL NUMBER Example: RD4M1 QS LLP 16FT MSL8 80CRI 35K I400LMF DARK ZT SCT F1/24A C032

Luminaire	Program	Linear Length Plan	Total Run Length	Maximum Section Length	LED Color Rendering	LED Color Temperature	Indirect LED Output
RD4M1	QS Quick ship (5 day shipping)	LLP Linear longest possible LSL Longest same length	__FT <i>Indicate Luminaire Row Length in 4' increments. Ex: 12FT</i>	MSL4 4' Section(s) MSL8 8' Section(s)	80CRI 80+ CRI	30K 3000K 35K 3500K 40K 4000K	I400LMF 400 nominal indirect lumens per foot I800LMF 800 nominal indirect lumens per foot

Minimum Dimming Level	Control Input	Voltage	Wiring Option	Emergency Options	Primary Sensor	Secondary Sensor
DARK Constant current, dimming to < 1%	ZT* 0-10V NLIGHT** nLight enabled <i>*0-10V will use linear dimming curve **Will use Logarithmic dimming curve</i>	120 120V 277 277V	SCT Single circuit	(Blank) None 1EC (1) Emergency circuit module 2EC (2) Emergency circuit module __EC __ Emergency circuit modules <i>Emergency type is installed in last 4' of luminaire sections. Separate feed required.</i>	(blank) No factory-installed, integrated sensor PDT_ Dual technology occupancy sensor, PIR & microphonics sensor ADC_ Daylight Dimming Sensor APD_ Dual technology PDT and ADC sensor <i>*Available with ZT or nLight only</i>	(blank) No factory-installed, integrated sensor SPDT_ Dual technology occupancy sensor, PIR & microphonics sensor SADC_ Daylight Dimming Sensor SAPD_ Dual technology PDT and ADC sensor <i>*Available with ZT or nLight only</i>

Mounting Type/	Overall Suspension	Color	Options
F1/ T-bar ceiling (universal mounting bracket)	24A 24" adjustable 36A 36" adjustable	C032 Gloss white	CSA* Manufactured to Canadian Standards CP Chicago Plenum (available with F1A only)
F1A/ T-bar ceiling (UMB with integrated J-box)	48A 48" adjustable 72A 72" adjustable		ELH** Emergency through wiring w/single feed, shared neutral ELS2*** Emergency through wiring w/single feed, separate neutrals
F2/ Hard ceiling (horizontal J-box)	<i>Measured from ceiling to bottom of luminaire.</i>		GLR Fast blow GMF Slow blow OJB Offset J-box at feed <i>*When chosen with EC entire section must be EC EX: MSL8 section would need to be 2EC for entire section **Not available with CSA *** Not available with CSA OR F2 mount</i>

Peerless®

Round 4 LED Design2Ship™ Aisle/Stack | Indirect/Direct | Suspended

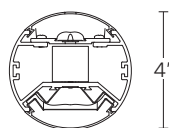
- Total System Integration features 5-year limited warranty by Acuity Brands covering all components and construction
- 4' and 8' sections
- Up to 78 lm/W
- Four distributions available
- High performance batwing and stack distribution using injection molded optic
- Meets or exceeds IESNA standards for vertical illumination ideal for 3' stacks to 7' aisles
- Flicker-free dimming to dark (0.1%) powered by eldoLED® driver
- Optional dual circuit switching for independent dimming of indirect and direct light outputs.
- Integrated nLight® module for system networking (optional)
- Integrated sensor for daylight dimming and/or occupancy detection (optional)

Maximum order quantity is 500 linear ft.



DIMENSIONS

□ RD4M4 (ASO)



eldoLED



MODEL NUMBER Example: RD4M4 QS LLP 16FT MSL8 80CRI 35K I400LMF 400LMF ASO DARK ZT 120 F1/24A C032

Luminaire	Program	Linear Length Plan	Total Run Length	Maximum Section Length	LED Color Rendering	LED Color Temperature
RD4M4	QS Quick ship (5 day shipping)	LLP Linear longest possible LSL Longest same length	__FT Indicate Luminaire Row Length in 4' increments. Ex: 12FT	MSL4 4' Section(s) MSL8 8' Section(s)	80CRI 80+ CRI	30K 3000K 35K 3500K 40K 4000K

Indirect LED Output	Direct LED Output	Shielding	Minimum Dimming Level	Control Input
I400LMF 400 nominal indirect lumens per foot I800LMF 800 nominal indirect lumens per foot	400LMF 400 nominal direct lumens per foot 800LMF 800 nominal direct lumens per foot	ASO Aisle/Stack optic	DARK Constant current, dimming to < 1%	ZT* 0-10V NLIGHT** nLight enabled <small>*0-10V will use linear dimming curve **Will use Logarithmic dimming curve</small>

Voltage	Wiring Option	Emergency Options	Primary Sensor	Secondary Sensor
120 120V 277 277V	SCT Single circuit DCT Dual circuit <small>For independent dimming of indirect and direct light outputs, choose DCT</small>	(blank) None 1EC (1) Emergency circuit module 2EC (2) Emergency circuit module __EC ___ Emergency circuit modules _RE10WLCP* _10 Watt battery pack, constant power with self diagnostics. T20 compliant <small>*Not available with F2 mount OR with ELS2. Emergency type is installed in last 4' of luminaire sections. Separate feed required.</small>	(blank) No factory-installed, integrated sensor PDT_ Dual technology occupancy sensor. PIR & microphonics sensor ADC_ Daylight Dimming Sensor APD_ Dual technology PDT and ADC sensor <small>*Available with ZT or nLight only</small>	(blank) No factory-installed, integrated sensor SPDT_ Dual technology occupancy sensor. PIR & microphonics sensor SADC_ Daylight Dimming Sensor SAPD_ Dual technology PDT and ADC sensor <small>*Available with ZT or nLight only</small>

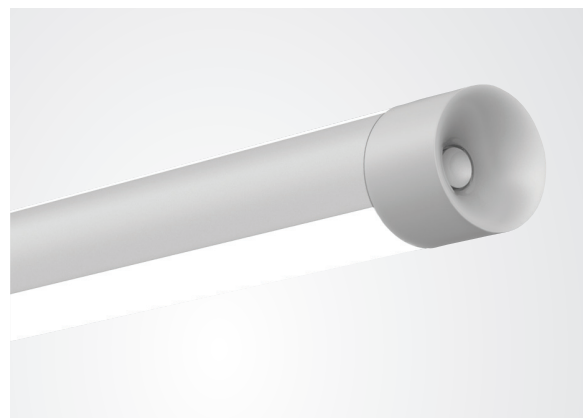
Mounting Type/	Overall Suspension	Color	Options
F1/ T-bar ceiling (universal mounting bracket) F1/A T-bar ceiling (UMB with integrated J-box) F2/ Hard ceiling (horizontal J-box)	24A 24" adjustable 36A 36" adjustable 48A 48" adjustable 72A 72" adjustable <small>Measured from ceiling to bottom of luminaire.</small>	C032 Gloss white	CSA* Manufactured to Canadian Standards CP Chicago Plenum (available with F1A only) ELH** Through wire feed right ELS2*** Through wire feed left with normal GLR Fast blow GMF Slow blow MCS Matching canopy at support for aesthetics MCSJ Matching canopy for J-box mounting at non-power feed support locations OJB Offset J-box at feed <small>*When chosen with EC entire section must be EC EX: MSL8 section would need to be 2EC for entire section **Not available with CSA *** Not available with CSA OR F2 mount</small>

Peerless®

Round 4 LED Design2Ship™ Indirect/Direct | Suspended

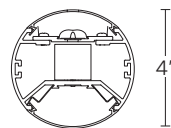
- Total System Integration features 5-year limited warranty by Acuity Brands covering all components and construction
- 4' and 8' sections
- Up to 85 lm/W
- Four distributions available
- Softshine®-engineered comfort optics
- High performance batwing distribution using injection molded optic
- Continuously illuminated lens
- Flicker-free dimming to dark (0.1%) powered by eldoLED® driver
- Optional dual circuit switching for independent dimming of indirect and direct light outputs.
- Integrated nLight® module for system networking (optional)
- Integrated sensor for daylight dimming and/or occupancy detection (optional)

Maximum order quantity is 500 linear ft.



DIMENSIONS

□ RD4M4



eldoLED

5
YEAR
warranty

soft
shine®

DS

MODEL NUMBER Example: RD4M4 QS LLP 16FT MSL8 80CRI 35K I400LMF 400LMF DARK ZT SCT F1/24A C032

Luminaire	Program	Linear Length Plan	Total Run Length	Maximum Section Length	LED Color Rendering
RD4MS	QS Quick ship (5 day shipping)	LLP Linear longest possible LSL Longest same length	_FT <i>Indicate Luminaire Row Length in 4' increments. Ex: 12FT</i>	MSL4 4' Section(s) MSL8 8' Section(s)	80CRI 80+ CRI

LED Color Temperature	Direct LED Output	Shielding	Minimum Dimming Level	Control Input	Voltage
30K 3000K 35K 3500K 40K 4000K	400LMF 400 nominal direct lumens per foot 800LMF 800 nominal direct lumens per foot	ASO Aisle/Stack optic	DARK Constant current, dimming to < 1%	ZT* 0-10V NLIGHT** nLight enabled <i>*0-10V will use linear dimming curve **Will use Logarithmic dimming curve</i>	120 120V 277 277V

Wiring Option	Emergency Options	Primary Sensor	Secondary Sensor
SCT Single circuit	(Blank) None 1EC (1) Emergency circuit module 2EC (2) Emergency circuit module _EC ___ Emergency circuit modules <i>Emergency type is installed in last 4' of luminaire sections. Separate feed required.</i>	(blank) No factory-installed, integrated sensor PDT_ Dual technology occupancy sensor. PIR & microphonics sensor ADC_ Daylight Dimming sensor APD_ Dual technology PDT and ADC sensor <i>*Available with ZT or nLight only</i>	(blank) No factory-installed, integrated sensor SPDT_ Dual technology occupancy sensor. PIR & microphonics sensor SADC_ Daylight Dimming sensor SAPD_ Dual technology PDT and ADC sensor <i>*Available with ZT or nLight only</i>

Mounting Type/	Overall Suspension	Color	Options
F1/ T-bar ceiling (universal mounting bracket) F1/A T-bar ceiling (UMB with integrated J-box) F2/ Hard ceiling (horizontal J-box)	24A 24" adjustable 36A 36" adjustable 48A 48" adjustable 72A 72" adjustable <i>Measured from ceiling to bottom of luminaire.</i>	C032 Gloss white	CSA* Manufactured to Canadian Standards CP Chicago Plenum (available with F1A only) ELH** Through wire feed right ELS2*** Through wire feed left with normal GLR Fast blow GMF Slow blow MCS Matching canopy at support for aesthetics MCSJ Matching canopy for J-box mounting at non-power feed support locations OJB Offset J-box at feed <i>*When chosen with EC entire section must be EC EX: MSL8 section would need to be 2EC for entire section **Not available with CSA *** Not available with CSA OR F2 mount</i>

Peerless®

Round 4 LED Design2Ship™ Aisle Stack/Direct | Suspended

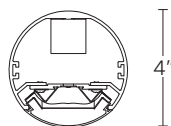
- Total System Integration features 5-year limited warranty by Acuity Brands covering all components and construction
- 4' and 8' sections
- Up to 77 lm/W
- Two lumen packages
- High performance stack distribution using injection molded optic
- Meets or exceeds IESNA standards for vertical illumination ideal for 3' stacks to 7' aisles
- Flicker-free dimming to dark (0.1%) powered by eldoLED® driver
- Integrated nLight® module for system networking (optional)
- Integrated sensor for daylight dimming and/or occupancy detection (optional)

Maximum order quantity is 500 linear ft.



DIMENSIONS

□ RD4MS (ASO)



eldoLED



soft shine



MODEL NUMBER Example: RD4MS QS LLP 16FT MSL8 80CRI 35K 400LMF ASO DARK ZT 120 F1/24A C032

Luminaire	Program	Linear Length Plan	Total Run Length	Maximum Section Length	LED Color Rendering	LED Color Temperature
RD4M4	QS Quick ship (5 day shipping)	LLP Linear longest possible LSL Longest same length	__FT <i>Indicate Luminaire Row Length in 4' increments. Ex: 12FT</i>	MSL4 4' Section(s) MSL8 8' Section(s)	80CRI 80+ CRI	30K 3000K 35K 3500K 40K 4000K

Indirect LED Output	Direct LED Output	Minimum Dimming Level	Control Input	Voltage	Wiring Option
I400LMF 400 nominal indirect lumens per foot I800LMF 800 nominal indirect lumens per foot	400LMF 400 nominal direct lumens per foot 800LMF 800 nominal direct lumens per foot	DARK Constant current, dimming to < 1%	ZT* 0-10V NLIGHT** nLight enabled <i>*0-10V will use linear dimming curve **Will use Logarithmic dimming curve</i>	120 120V 277 277V	SCT Single circuit DCT Dual circuit <i>For independent dimming of indirect and direct light outputs, choose DCT</i>

Emergency Options	Primary Sensor	Secondary Sensor
(Blank) None 1EC (1) Emergency circuit module 2EC (2) Emergency circuit module __EC __ Emergency circuit modules _REIOWLCP* _ 10 Watt battery pack, constant power with self diagnostics. T20 compliant <i>*Not available with F2 mount OR with ELS2. Emergency type is installed in last 4' of luminaire sections. Separate feed required.</i>	(blank) No factory-installed, integrated sensor PDT_ Dual technology occupancy sensor. PIR & microphonics sensor ADC_ Daylight Dimming Sensor APD_ Dual technology PDT and ADC sensor <i>*Available with ZT or nLight only</i>	(blank) No factory-installed, integrated sensor SPDT_ Dual technology occupancy sensor. PIR & microphonics sensor SADC_ Daylight Dimming Sensor SAPD_ Dual technology PDT and ADC sensor <i>*Available with ZT or nLight only</i>

Mounting Type/	Overall Suspension	Color	Options
F1/ T-bar ceiling (universal mounting bracket) F1A/ T-bar ceiling (UMB with integrated J-box) F2/ Hard ceiling (horizontal J-box)	24A 24" adjustable 36A 36" adjustable 48A 48" adjustable 72A 72" adjustable <i>Measured from ceiling to bottom of luminaire.</i>	C032 Gloss white	CSA* Manufactured to Canadian Standards CP Chicago Plenum (available with F1A only) ELH** Emergency through wiring w/single feed, shared neutral ELS2*** Emergency through wiring w/single feed, separate neutrals GLR Fast blow GMF Slow blow MCS Matching canopy at support for aesthetics MCSJ Matching canopy for J-box mounting at non-power feed support locations OJB Offset J-box at feed <i>*When chosen with EC entire section must be EC EX: MSL8 section would need to be 2EC for entire section **Not available with CSA *** Not available with CSA OR F2 mount</i>

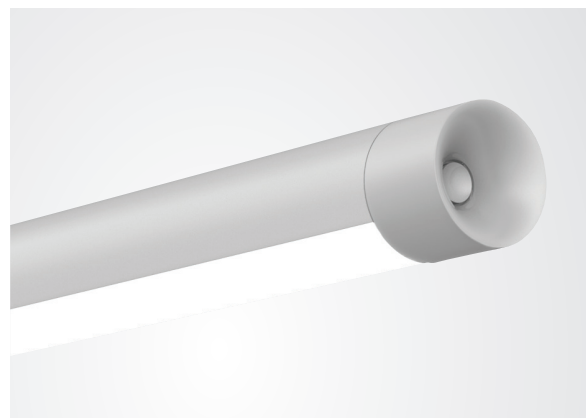
Peerless®

Round 4 LED Design2Ship™

Direct | Suspended

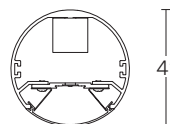
- Total System Integration features 5-year limited warranty by Acuity Brands covering all components and construction
- 4' and 8' sections
- Up to 85 lm/W
- Two lumen packages
- Softshine®-engineered comfort optics
- Continuously illuminated lens
- Flicker-free dimming to dark (0.1%) powered by eldoLED® driver
- Integrated nLight® module for system networking (optional)
- Integrated sensor for daylight dimming and/or occupancy detection (optional)

Maximum order quantity is 500 linear ft.



DIMENSIONS

□ RD4MS



eldoLED



MODEL NUMBER Example: RD4MS QS LLP 16FT MSL8 80CRI 35K 400LMF DARK ZT SCT F1/24A C032

Luminaire	Program	Linear Length Plan	Total Run Length	Maximum Section Length	LED Color Rendering	LED Color Temperature	Direct LED Output
RD4MS	QS Quick ship (5 day shipping)	LLP Linear longest possible LSL Longest same length	_FT Indicate Luminaire Row Length in 4" increments. Ex: 12FT	MSL4 4' Section(s) MSL8 8' Section(s)	80CRI 80+ CRI	30K 3000K 35K 3500K 40K 4000K	400LMF 400 nominal direct lumens per foot 800LMF 800 nominal direct lumens per foot

Shielding	Minimum Dimming Level	Control Input	Voltage	Wiring Option	Emergency Options
(Blank) No Aisle/Stack optic ASO Aisle/Stack optic	DARK Constant current, dimming to < 1%	ZT* 0-10V NLIGHT** nLight enabled *0-10V will use linear dimming curve **Will use Logarithmic dimming curve	120 120V 277 277V	SCT Single circuit	(Blank) None 1EC (1) Emergency circuit module 2EC (2) Emergency circuit module _EC ___ Emergency circuit modules Emergency type is installed in last 4' of luminaire sections. Separate feed required.

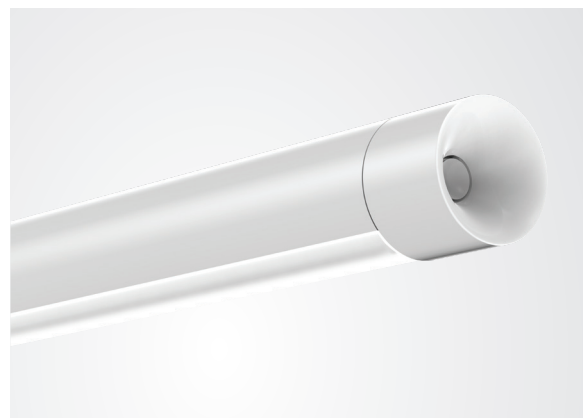
Primary Sensor	Secondary Sensor	Mounting Type/	Overall Suspension	Color	Options
(blank) No factory-installed, integrated sensor PDT_ Dual technology occupancy sensor. PIR & microphonics sensor ADC_ Daylight Dimming Sensor APD_ Dual technology PDT and ADC sensor *Available with ZT or nLight only	(blank) No factory-installed, integrated sensor SPDT_ Dual technology occupancy sensor. PIR & microphonics sensor SADC_ Daylight Dimming Sensor SAPD_ Dual technology PDT and ADC sensor *Available with ZT or nLight only	F1/ T-bar ceiling (universal mounting bracket) F1A/ T-bar ceiling (UMB with integrated J-box) F2/ Hard ceiling (horizontal J-box)	24A 24" adjustable 36A 36" adjustable 48A 48" adjustable 72A 72" adjustable Measured from ceiling to bottom of luminaire.	C032 Gloss white	CSA* Manufactured to Canadian Standards CP Chicago Plenum (available with F1A only) ELH** Emergency through wiring w/single feed, shared neutral ELS2*** Emergency through wiring w/single feed, separate neutrals GLR Fast blow GMF Slow blow MCS Matching canopy at support for aesthetics MCSJ Matching canopy for J-box mounting at non-power feed support locations OJB Offset J-box at feed *When chosen with EC entire section must be EC EX: MSL8 section would need to be 2EC for entire section **Not available with CSA *** Not available with CSA OR F2 mount

Peerless®

Round 4 LED Design2Ship™ Wall Wash | Suspended

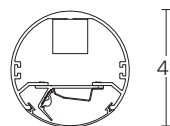
- Total System Integration features 5-year limited warranty by Acuity Brands covering all components and construction
- 4' and 8' sections
- Up to 68 lm/W
- Two lumen packages
- High performance wall wash using injection molded optic
- Flicker-free dimming to dark (0.1%) powered by eldoLED® driver

Maximum order quantity is 500 linear ft.



DIMENSIONS

□ RD4MW



eldoLED™



MODEL NUMBER Example: RD4MW QS LLP 16FT MSL8 80CRI 35K 300LMF DARK ZT SCT F1/24A C032

Luminaire	Program	Linear Length Plan	Total Run Length	Maximum Section Length	LED Color Rendering	LED Color Temperature	Direct LED Output
RD4MW	QS Quick ship (5 day shipping)	LLP Linear longest possible LSL Longest same length	__FT <i>Indicate Luminaire Row Length in 4' increments. Ex: 12FT</i>	MSL4 4' Section(s) MSL8 8' Section(s)	80CRI 80+ CRI	30K 3000K 35K 3500K 40K 4000K	300LMF 300 Nominal direct lumens per foot 600LMF 600 Nominal direct lumens per foot
Minimum Dimming Level	Control Input	Voltage	Wiring Option	Emergency Options	Primary Sensor	Secondary Sensor	
DARK Constant current, dimming to < 1%	ZT* 0-10V nLIGHT** nLight enabled <i>*0-10V will use linear dimming curve **Will use logarithmic dimming curve</i>	120 120V 277 277V	SCT Single circuit	(Blank) None 1EC (1) Emergency circuit module 2EC (2) Emergency circuit module __EC __ Emergency circuit modules <i>Emergency type is installed in last 4' of luminaire sections. Separate feed required.</i>	(blank) No factory-installed, integrated sensor PDT_ Dual technology occupancy sensor. PIR & microphonics sensor ADC_ Daylight Dimming Sensor APD_ Dual technology PDT and ADC sensor <i>*Available with ZT or nLight only</i>	(blank) No factory-installed, integrated sensor SPDT_ Dual technology occupancy sensor. PIR & microphonics sensor SADC_ Daylight Dimming Sensor SAPD_ Dual technology PDT and ADC sensor <i>*Available with ZT or nLight only</i>	
Mounting Type/	Overall Suspension	Color	Options				
F1/ T-bar ceiling (universal mounting bracket) F1A/ T-bar ceiling (UMB with integrated J-box) F2/ Hard ceiling (horizontal J-box)	24A 24" adjustable 36A 36" adjustable 48A 48" adjustable 72A 72" adjustable <i>Measured from ceiling to bottom of luminaire.</i>	C032 Gloss white	CSA* Manufactured to Canadian Standards CP Chicago Plenum (available with F1A only) ELH** Emergency through wiring w/single feed, shared neutral ELS2*** Emergency through wiring w/single feed, separate neutrals GLR Fast blow GMF Slow blow MCS Matching canopy at support for aesthetics MCSJ Matching canopy for J-box mounting at non-power feed support locations OJB Offset J-box at feed <i>*When chosen with EC entire section must be EC EX: MSL8 section would need to be 2EC for entire section **Not available with CSA *** Not available with CSA OR F2 mount</i>				

Peerless®

Round 4 LED Design2Ship™ Asymmetric Indirect | Wall

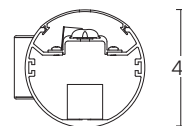
- Total System Integration features 5-year limited warranty by Acuity Brands covering all components and construction
- 4' and 8' sections
- Up to 66 lm/W
- Two lumen packages
- High performance asymmetric distribution using injection molded optic
- Flicker-free dimming to dark (0.1%) powered by eldoLED® driver

Maximum order quantity is 500 linear ft.



DIMENSIONS

RD4W1



eldoLED®

5
YEAR
warranty



MODEL NUMBER Example: RD4W1 QS LLP 16FT MSL8 80CRI 35K I300LMF DARK ZT SCT C032

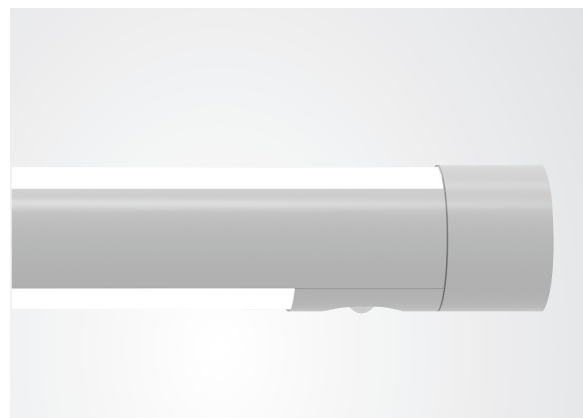
Luminaire	Program	Linear Length Plan	Total Run Length	Maximum Section Length	LED Color Rendering	LED Color Temperature
RD4W1	QS Quick ship (5 day shipping)	LLP Linear longest possible LSL Longest same length	__FT <i>Indicate Luminaire Row Length in 4' increments. Ex: 12FT</i>	MSL4 4' Section(s) MSL8 8' Section(s)	80CRI 80+ CRI	30K 3000K 35K 3500K 40K 4000K
Indirect LED Output	Minimum Dimming Level	Control Input	Voltage	Wiring Option	Emergency Options	
I300LMF 300 Nominal indirect lumens per foot	DARK Constant current, dimming to < 1%	ZT* 0-10V <i>*0-10V will use linear dimming curve</i>	120 120V 277 277V	SCT Single circuit	(Blank) None 1EC (1) Emergency circuit module 2EC (2) Emergency circuit module __EC __ Emergency circuit modules <i>Emergency type is installed in last 4' of luminaire sections. Separate feed required.</i>	
I600LMF 600 Nominal indirect lumens per foot						
Color	Options					
C032 Gloss white	CSA* Manufactured to Canadian Standards ELH** Emergency through wiring w/single feed, shared neutral ELS2** Emergency through wiring w/single feed, separate neutrals <i>*When chosen with EC entire section must be EC EX: MSL8 section would need to be 2EC for entire section **Not available with CSA</i>					

Peerless®

Round 4 LED Design2Ship™ Stairway I/D | Wall

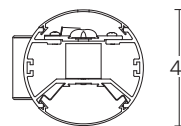
- Total System Integration features 5-year limited warranty by Acuity Brands covering all components and construction
- 4' and 8' individual units
- Up to 75 lm/W
- Four lumen packages
- Softshine®-engineered comfort optics
- Flicker-free dimming to dark (0.1%) powered by eldoLED® driver
- Integrated nLight occupancy sensor pre-programmed to 10% (STW MIN10) or 50% (STW MIN50) when unoccupied brightens to 100% when occupied

Maximum order quantity is 500 linear ft.



DIMENSIONS

RD4W4 (STW)



eldoLED™



soft shine®

nLIGHT



MODEL NUMBER Example: RD4W4 QS STW LLP 8FT MSL8 80CRI 35K I300LMF 600LMF MIN10 ZT SCT C032

Luminaire	Program	Stairwell	Total Run Length	LED Color Rendering	LED Color Temperature	Indirect LED Output
RD4W4	QS Quick ship (5 day shipping)	STW	4FT 4ft 8FT 8ft (must select MSL8)	80CRI 80+ CRI	30K 3000K 35K 3500K 40K 4000K	I300LMF 300 Nominal indirect lumens per foot I600LMF 600 Nominal indirect lumens per foot
Direct LED Output	Minimum Dimming Level	Control Input	Voltage	Wiring Option		
400LMF 400 nominal direct lumens per foot 800LMF 800 nominal direct lumens per foot	MIN10 10% dimming MIN50 50% dimming	ZT* 0-10V *0-10V will use linear dimming curve	120 120V 277 277V	SCT Single circuit		
Emergency Options	Color	Options				
(Blank) None 1EC (1) Emergency circuit module <i>Emergency type is installed in last 4' of luminaire sections. Separate feed required.</i>	C032 Gloss white	CSA* Manufactured to Canadian Standards GLR Fast blow GMF Slow blow <i>*When chosen with EC entire section must be EC EX: MSL8 section would need to be 2EC for entire section</i>				

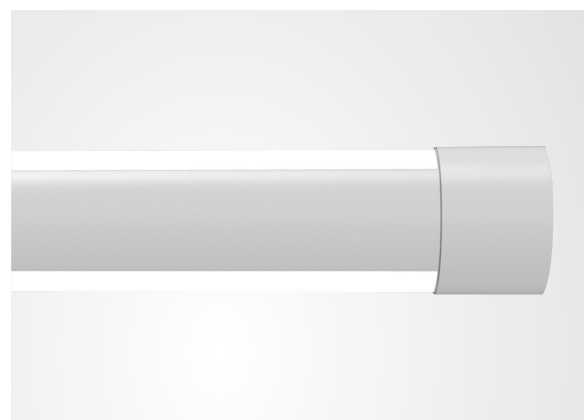
Peerless®

Round 4 LED Design2Ship™

I/D | Wall

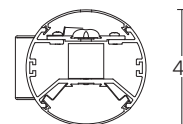
- Total System Integration features 5-year limited warranty by Acuity Brands covering all components and construction
- 4' and 8' sections
- Up to 75 lm/W
- Four distributions available
- Softshine®-engineered comfort optics
- High performance asymmetric distribution using injection molded optic
- Flicker-free dimming to dark (0.1%) powered by eldoLED® driver

Maximum order quantity is 500 linear ft.



DIMENSIONS

RD4W4



eldoLED

5 YEAR
warranty

soft
shine

DS

MODEL NUMBER Example: RD4W4 QS LLP 16FT MSL8 80CRI 35K I600LMF 600LMF DARK ZT SCT C032

Luminaire	Program	Linear Length Plan	Total Run Length	Maximum Section Length	LED Color Rendering	LED Color Temperature	Indirect LED Output
RD4W4	QS Quick ship (5 day shipping)	LLP Linear longest possible LSL Longest same length	__FT Indicate Luminaire Row Length in 4' increments. Ex: 12FT	MSL4 4' Section(s) MSL8 8' Section(s)	80CRI 80+ CRI	30K 3000K 35K 3500K 40K 4000K	I300LMF 300 Nominal indirect lumens per foot I600LMF 600 Nominal indirect lumens per foot
Direct LED Output		Minimum Dimming Level		Control Input	Voltage	Wiring Option	
400LMF	400 nominal direct lumens per foot	DARK Constant current, dimming to < 1%		ZT* 0-10V *0-10V will use linear dimming curve	120 120V 277 277V	SCT Single circuit DCT Dual circuit <i>For independent dimming of indirect and direct light outputs, choose DCT</i>	
Emergency Options		Color		Options			
(Blank)	None	C032 Gloss white		CSA* Manufactured to Canadian Standards ELH** Emergency through wiring w/single feed, shared neutral ELS2** Emergency through wiring w/single feed, separate neutrals GLR Fast blow GMF Slow blow *When chosen with EC entire section must be EC EX: MSL8 section would need to be 2EC for entire section **Not available with CSA			
1EC	(1) Emergency circuit module						
2EC	(2) Emergency circuit module						
__EC	__ Emergency circuit modules						
<i>Emergency type is installed in last 4' of luminaire sections. Separate feed required.</i>							

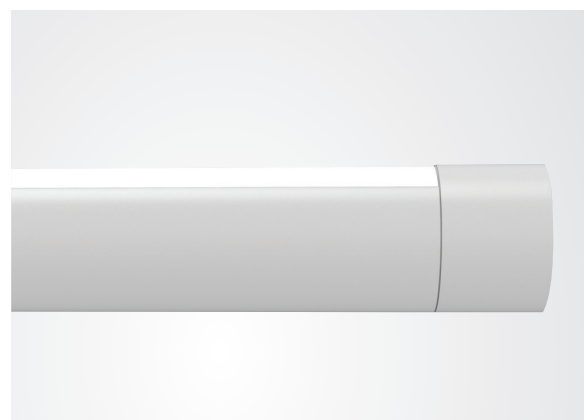
Peerless®

Round 4 LED Design2Ship™

Direct | Wall

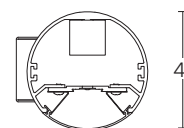
- Total System Integration features 5-year limited warranty by Acuity Brands covering all components and construction
- 4' and 8' sections
- Up to 85 lm/W
- Two lumen packages
- Softshine®-engineered comfort optics
- Flicker-free dimming to dark (0.1%) powered by eldoLED® driver

Maximum order quantity is 500 linear ft.



DIMENSIONS

RD4WS



eldoLED™

5 YEAR
warranty

soft
shine®

DS

MODEL NUMBER Example: RD4WS QS LLP 16FT MSL8 80CRI 35K 400LMF DARK ZT SCT C032

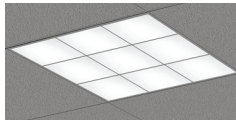
Luminaire	Program	Linear Length Plan	Total Run Length	Maximum Section Length	LED Color Rendering	LED Color Temperature
RD4WS	QS Quick ship (5 day shipping)	LLP Linear longest possible LSL Longest same length	__FT Indicate Luminaire Row Length in 4' increments. Ex: 12FT	MSL4 4' Section(s) MSL8 8' Section(s)	80CRI 80+ CRI	30K 3000K 35K 3500K 40K 4000K
Direct LED Output	Minimum Dimming Level	Control Input	Voltage	Wiring Option		
400LMF 400 nominal direct lumens per foot 800LMF 800 nominal direct lumens per foot	DARK Constant current, dimming to < 1%	ZT* 0-10V *0-10V will use linear dimming curve	120 120V 277 277V	SCT Single circuit		
Emergency Options	Color	Options				
(Blank) None 1EC (1) Emergency circuit module 2EC (2) Emergency circuit module __EC __ Emergency circuit modules <i>Emergency type is installed in last 4' of luminaire sections. Separate feed required.</i>	C032 Gloss white	CSA* Manufactured to Canadian Standards ELH** Emergency through wiring w/single feed, shared neutral ELS2** Emergency through wiring w/single feed, separate neutrals GLR Fast blow GMF Slow blow <i>*When chosen with EC entire section must be EC EX: MSL8 section would need to be 2EC for entire section **Not available with CSA</i>				

Peerless®

Architectural Brands

Design2Ship luminaires are available across our architectural brands including Mark Architectural Lighting™, Peerless®, Winona®, Hydrel®, Aculux®, Indy™ and Gotham®. If you don't see what you're looking for in this brochure, be sure to check out other available brands at www.acuitybrands.com/design2ship.

MARK
ARCHITECTURAL
LIGHTING™



Rubik® LED



Whisper LED



Slot LED

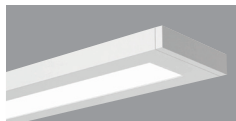


Magellan™ LED

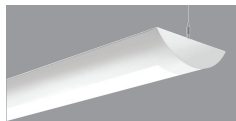


SPR LED

Peerless®



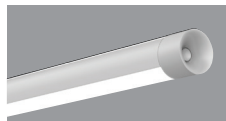
Bruno® LED



Cerra® 10 LED



Square

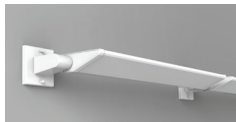


Round



Cerra® 7 LED

WINONA®



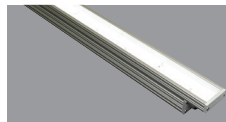
Windirect® LED



Forms LED



Winline LED



BLANCA Series

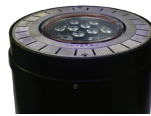


STEPS

HYDREL



Aspen LED
Winscape®



M9410/
M9420



M9710C/
M9720C



Paradox
PDX4

gotham®

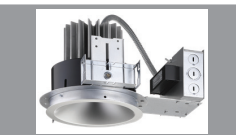


EVO®



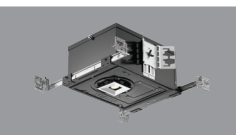
Incito™

indy™



L-Series

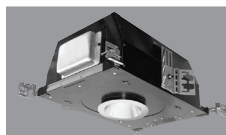
ACULUX®



AX2/ AX2SQ
Series



AX3/ AX3SQ
Series



AX4/ AX4SQ
Series



A+ Certified solutions from Acuity Brands help you quickly and confidently select and implement lighting systems, for indoor or outdoor applications, that are both compatible and consistent.

For lighting applications, A+ means verified consistent performance, visual appearance and system interoperability of all luminaires and controls within the certified solution.

For lighting professionals, it means confidence that all parts of the lighting system will work together and meet common Acuity Brands specifications.

Go to www.acuitybrands.com/aplus or contact your local Acuity Brands representative for more information.

ACULUX®

gotham®

HYDREL

indy®

MARK
ARCHITECTURAL
LIGHTING

Peerless®

WINONA®